



2022 LIFE-CHANGING  
IMPACT REPORT

# transformations



The life-changing impact Wellspring Living makes is unique. It is holistic and comprehensive. The youth, women and their children we serve are more than numbers. This special report has been compiled to give you a glimpse at the depth as well as the breadth of our care. Please also note our work with emerging organizations across the nation.

I hope as you review each case study, your heart will be touched with the remarkable people we serve and the beautiful transformations they've experienced and that through these pages, your heart will be drawn to partner in an even more profound way as we build capacity to provide greater transformative opportunities for youth, women and their children.

*-Mary Frances Bowley*

IN 2022:

Wellspring Living served 233 unduplicated\* participants across all programs

\*Some Wellspring Living participants engage in multiple programs, taking advantage of the full continuum of care offered.

## How We Serve

4,188

HOURS OF THERAPY PROVIDED

6,849

HOURS OF EDUCATIONAL INSTRUCTION

2,056

LIFE SKILLS CLASSES HELD

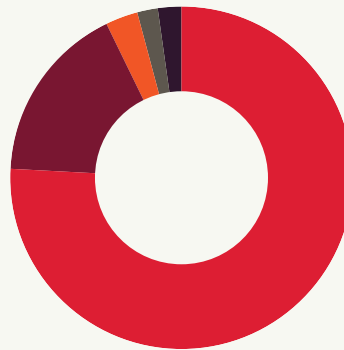
747

CASE MANAGEMENT SESSIONS HELD

5,390

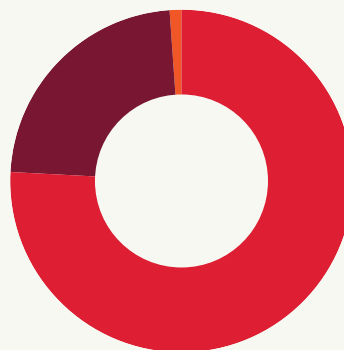
INDIVIDUAL, GROUP, AND FAMILY THERAPY SESSIONS HELD

## Who We Serve



73% BLACK  
18% CAUCASIAN  
5% MULTI-RACIAL  
3% LATINX  
1% ASIAN

## Participants Come From



75% METRO ATLANTA  
24% OTHER COUNTIES IN GEORGIA  
1% OUT OF STATE

FEMALE

85%

MALE

5%

NON-BINARY

10%

# Meet Erin

## *Receiving Hope Center + Girls' Residential Program*

Erin was 10 years old when she was first raped by her mother's boyfriend. She ran away searching for someone to love and protect her and she fell into criminal activities, including trespassing and shoplifting. Erin entered the Receiving Hope Center after authorities discovered that her uncle trafficked her in exchange for meth. Erin was angry and confused.



16 → 17

AGE

10

MONTHS IN YOUTH  
PROGRAMS

57 → 34

TRAUMA LEVEL  
PROGRESS\*

\*CPSS ASSESSMENT

4th → 7th

READING LEVEL PROGRESS  
BY GRADE

### Pre-Program Barriers

- Was under the control of multiple exploiters, including her mother
- Ran away from four different foster homes
- Was enrolled in six different schools in the last two years
- On probation for assault charge

### In-Program Achievements

- Earned 11 high school credits
- Became a peer mentor for the program
- Interned at a local pet store
- Reunited with safe family members through weekly family therapy

*Dear GRP Staff,*

*Where do I even start? I'm writing to let you know that I appreciate you. I can't believe I'll be graduating from high school in just a few months! I will be the first one in my family to finish high school and go to college. Tell the clinician that I am using all my coping skills to stay out of trouble. I am grateful for the love and support you have given me. I am so happy you didn't give up on me.*

*Love, Erin*

# Say hi to Amanda

## Women's Residential Program

Amanda came in with just the clothes on her back, malnourished and exhausted. She was apprehensive about trusting the staff and her peers, remaining quiet and closed off in group settings. She cried when she thought about her daughter. She didn't think she could stay in the program and wondered if the staff was genuine.

17 MONTHS IN PROGRAM

27 → 28 AGE

Did Not Graduate High School → Acquired GED EDUCATION

42 → 8 ANXIETY LEVEL\*

24 → 7 DEPRESSION LEVEL\*  
\*BECK INVENTORIES



### Pre-Program Barriers

- Sexual abuse began at age six
- Became homeless in middle school
- Was trafficked by her older "boyfriend" at 15 years old
- Dropped out of high school at 16
- Addicted to meth for over 10 years
- Lost custody of daughter

### Post-Program Growth

- Making healthy choices and setting appropriate boundaries
- Displaying healthier coping skills and regulating emotions
- Transitioned to living in the WellSpring Living Bridge Community
- Secured full-time, living wage employment
- Reunited with her daughter
- Has a renewed sense of confidence in herself, her abilities, and her future

*"You helped me clean out the garbage of my life. I've been healed from so much of my past. I feel so much safer and can trust people more. I am confident that my dreams of owning my own home and being a good mom to my daughter are becoming a reality."*

Get to know  
**Latoya**



**32→34**

AGE

Latoya saw an ad for the Women's Academy on Instagram and decided to apply. She stated that she had never liked school and the only time that she remembered learning was when she went to a new school and was put in a class that only had a few other students. Upon entering WA, she had dysfunctional relationships with her children, parents, and siblings.

**3rd→6th**

READING LEVEL PROGRESS  
BY GRADE

**Pre-Program Barriers**

- Grew up in a household full of violence
- First victimized at 12
- Dropped out of school at 15
- Experienced homelessness multiple times throughout her early adult life
- Undiagnosed mental illness

**Post-Program Growth**

- Earned GED and Microsoft Office certifications
- Obtained full-time, living wage employment
- Utilizing healthy coping skills to regulate emotions
- Renewed relationships with family members, including children

**24**

MONTHS IN PROGRAM

*After completing six 10-week GED sessions, Latoya was able to get testing accommodations due to her anxiety disorder and subsequently earned her GED Certificate. Clutching her certificate with tears in her eyes, she told her peers and the team, "I have started so many things, and I finally finished something." At the successful completion of her Apprenticeship Track, she stated "I am a better wife, mom, and business woman because of what I have learned here."*

# Meet Molly

## *Post-Program Support*

28→31

AGE

30

MONTHS IN  
GRADUATE VILLAGE

### Preceding Post-Program Support

- Did not have a savings account
- Experienced several years of couch-surfing with friends
- Only held minimum wage jobs; no way for independent living

### Current Achievements

- Has been living independently in the Graduate Village for almost three years
- Has over \$10,000 in her savings account
- Has a safe, supportive community
- Enjoys caring for her home and loves having her own garden
- Has been steadily employed for over three years; receiving two promotions

*"The Graduate Village has changed my life and how I view myself. I can be myself here. I don't always agree with everything the community coordinator says and she doesn't always agree with me but she listens to me and has always accepted me for me no matter what."*

# About the Institute

To provide access to transformational care to victims of sexual exploitation by mentoring emerging organizations to establish sustainable, trauma-informed, comprehensive programming.



38 & 13

STATES & COUNTRIES  
REACHED

102

ORGANIZATIONS  
MENTORED OR TRAINED

93%

ORGANIZATIONS MENTORED  
ARE STILL OPEN TODAY

9k+

PARTICIPANTS  
SERVED

This client had a passion to serve trafficked youth. For years, this group provided community care for vulnerable youth, but had no experience in residential care, nor had a place secured to serve trafficked girls.

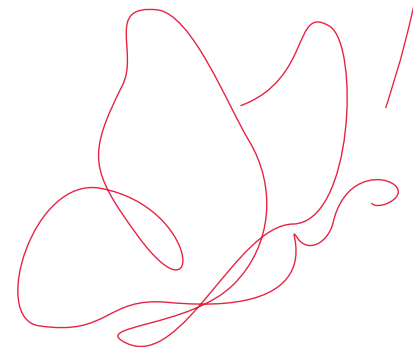
## Pre-Institute Barriers

- Lack of knowledge of best practices in serving victims
- Needed a safe location
- Needed leadership training
- Challenges navigating government systems to acquire childcare license
- Needed to develop collaborative partnerships

## Post-Institute Growth and Achievements

- Attended Institute trainings and multiple site visits to gain an understanding of residential care
- Created a strategic plan to open the first facility in their state to serve trafficked girls
- Acquired property and renovated a space to serve 10 girls
- Opened in March 2022
- First graduate in August 2022

*“The Wellspring Living Institute has been invaluable in every step of our organization’s process, from grassroots anti-trafficking advocacy to acquiring our nonprofit status, building our structure, and connecting us to other vital partners and resources necessary to completing our goals.”*



*transforming lives*  
**of those at risk or victimized  
by sexual exploitation**



1040 BOULEVARD SE, SUITE M  
ATLANTA, GA 30312  
WELLSPRINGLIVING.ORG

\*CPSS Assessment and Beck Inventories  
The CPSS Assessment is also known as the Child PTSD Symptom Scale.  
The Beck Depression Inventory (BDI) measures characteristic attitudes and symptoms of depression.

Our 2022 Life Changing Impact Report was developed in consultation with Thomson Reuters.